



WORLD SEPSIS DAY INFOGRAPHICS

WHAT IS SEPSIS?

SEPSIS ARISES WHEN THE BODY'S RESPONSE TO AN INFECTION INJURES ITS OWN TISSUES AND ORGANS. IT MAY LEAD TO SHOCK, MULTI-ORGAN FAILURE, AND DEATH – ESPECIALLY IF NOT RECOGNIZED EARLY AND TREATED PROMPTLY.

AWARENESS SAVES LIVES.
LEARN ABOUT SEPSIS AT
WORLDSEPSISDAY.ORG



Infographic 1/21



Global
Sepsis
Alliance

worldsepsisday.org
globalsepsisalliance.org

September | World
13 | Sepsis
2024 | Day

WORLD SEPSIS DAY INFOGRAPHICS

A GLOBAL HEALTH CRISIS



47 000 000 - 50 000 000
cases per year



At least 11 000 000 die
- 1 death every 2.8 seconds



Survivors may face
lifelong consequences



1 in every 5 deaths worldwide
is associated with sepsis

Infographic 2/21



Global
Sepsis
Alliance

worldsepsisday.org
globalsepsisalliance.org

September | World
13 | Sepsis
2024 | Day

WORLD SEPSIS DAY INFOGRAPHICS

COMMON SOURCES OF SEPSIS

Meningitis

- Infection of Unknown Source
- Viruses, such as SARS-CoV-2

Skin or Soft Tissue Infection

Pneumonia

Catheter-Related Infection

Bloodstream Infection

Urinary Tract Infection

Abdominal Infections, e.g.

- Appendicitis
- Infectious Diarrhea
- Gallbladder Infection

Infographic 3/21



Global
Sepsis
Alliance

worldsepsisday.org
globalsepsisalliance.org

September | World
13 | Sepsis
2024 | Day

WORLD SEPSIS DAY INFOGRAPHICS

THESE SYMPTOMS MIGHT INDICATE SEPSIS



Slurred Speech
or Confusion



Extreme Shivering
or Muscle Pain/Fever



Passing No Urine
All Day



Severe
Breathlessness



It Feels Like
You're Going to Die



Skin Mottled
or Discolored

Infographic 4/21

Experiencing any of these symptoms? Contact your local hospital or physician immediately.



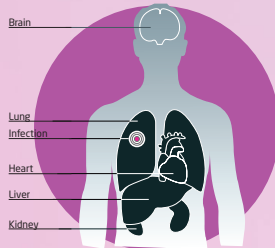
Global
Sepsis
Alliance

worldsepsisday.org
globalsepsisalliance.org

September | World
13 | Sepsis
2024 | Day

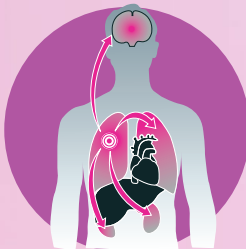
WORLD SEPSIS DAY INFOGRAPHICS

PHYSIOLOGY OF SEPSIS



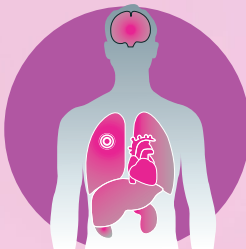
From a Local Infection to a Body-Wide Injury

A local infection, such as pneumonia or a severe skin infection, overcomes the body's local defense mechanisms. Invading microorganisms and the toxins they produce induce a powerful body-wide immune response.



Sepsis

This immune response to infection can be so intense that the body can lose control of it. The "dysregulated" response can result in injury to tissues and organs, and is known as sepsis.



Septic Shock and Multi-Organ Failure

Cardio-circulatory failure can develop, leading to a sudden drop in blood pressure. This is called septic shock. Several organs then stop functioning sequentially or simultaneously. This multi-organ failure often leads to death.

Infographic 5/21



Global
Sepsis
Alliance

worldsepsisday.org
globalsepsisalliance.org

September | World
13 | Sepsis
2024 | Day

WORLD SEPSIS DAY INFOGRAPHICS

RISK GROUPS

Everybody Can Get Sepsis - Certain People Are at Even Higher Risk



People with Chronic Diseases
e.g. Lung, Liver, Heart



People with No Spleen



People with Weakened Immune Systems
e.g. AIDS, Diabetes



Children Under 1



Adults Over 60

Infographic 6/21



Global
Sepsis
Alliance

worldsepsisday.org
globalsepsisalliance.org

September | World
13 | Sepsis
2024 | Day

WORLD SEPSIS DAY INFOGRAPHICS

PREVENTION SAVES LIVES

Prevent Infection - Prevent Sepsis - Save Lives



Vaccination



Clean Water



Hand Hygiene



Prevent HAIs
(Hospital-Acquired Infections)



Safe Childbirth



Awareness

Infographic 7/21



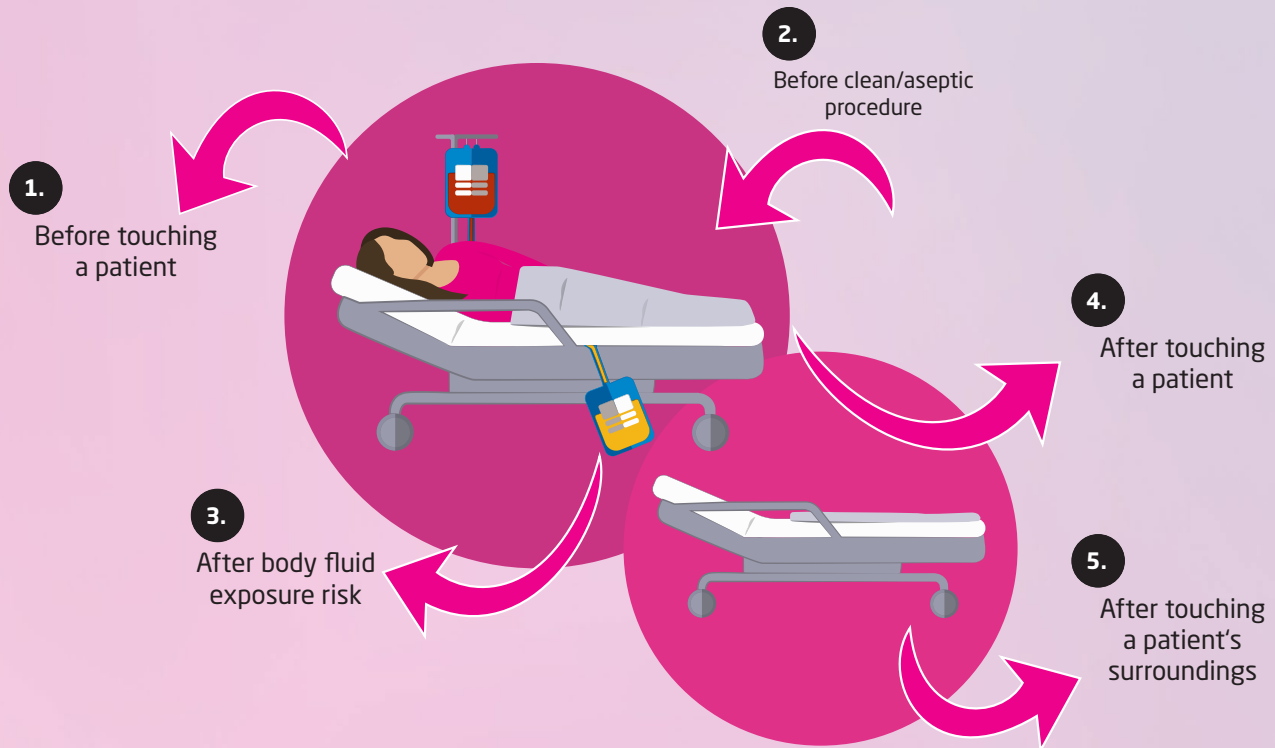
Global
Sepsis
Alliance

worldsepsisday.org
globalsepsisalliance.org

September | World
13 | Sepsis
2024 | Day

WORLD SEPSIS DAY INFOGRAPHICS

PREVENT SEPSIS – WASH YOUR HANDS



Infographic 8/21



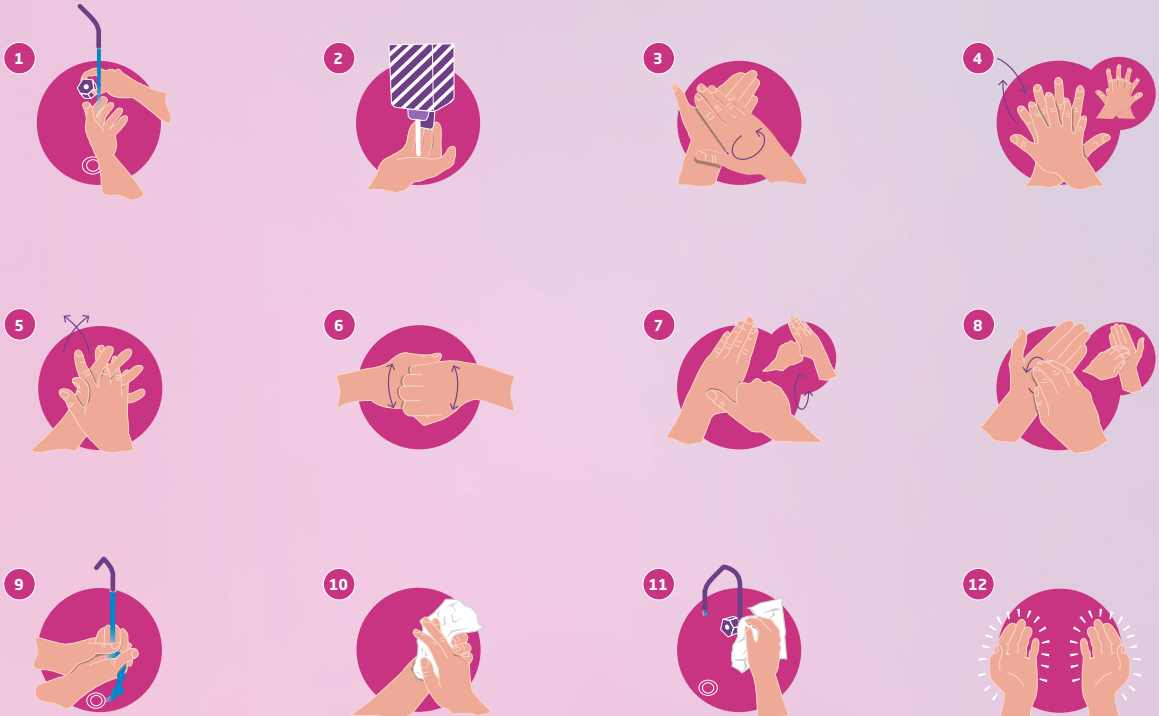
Global
Sepsis
Alliance

worldsepsisday.org
globalsepsisalliance.org

September | World
13 | Sepsis
2024 | Day

WORLD SEPSIS DAY INFOGRAPHICS

12 STEPS OF HANDWASHING



Infographic 9/21



Global
Sepsis
Alliance

worldsepsisday.org
globalsepsisalliance.org

September | World
13 | Sepsis
2024 | Day

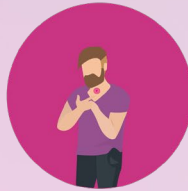
WORLD SEPSIS DAY INFOGRAPHICS

POST-SEPSIS SYMPTOMS

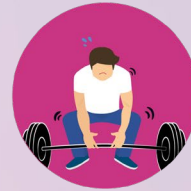
Sepsis Does Not End at Hospital Discharge



Sadness



Difficulty Swallowing



Muscle Weakness



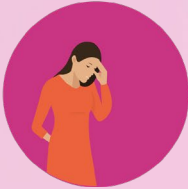
Clouded Thinking



Difficulty Sleeping



Poor Memory



Difficulty Concentrating



Fatigue



Anxiety

Infographic 10/21



Global
Sepsis
Alliance

worldsepsisday.org
globalsepsisalliance.org

September | World
13 | Sepsis
2024 | Day



WORLD SEPSIS DAY INFOGRAPHICS

February 4th – World Cancer Day

THE BATTLE AGAINST CANCER CAN INCLUDE FIGHTING
INFECTIONS AND SEPSIS DUE TO SUPPRESSED
IMMUNE SYSTEMS.

SEPSIS RATES ARE **10** TIMES HIGHER IN CANCER PATIENTS.
CANCER PATIENTS HAVE A **43%** HIGHER CHANCE OF DYING
FROM SEPSIS THAN NON-CANCER PATIENTS.

KNOW THE SIGNS OF SEPSIS!



Infographic 11/21



Global
Sepsis
Alliance

worldsepsisday.org
globalsepsisalliance.org

September | World
13 | Sepsis
2024 | Day



WORLD SEPSIS DAY INFOGRAPHICS

March 24th – World Tuberculosis Day

WHILE TUBERCULOSIS CAN LEAD TO SEPSIS ITSELF,
IT MORE OFTEN LEADS TO A WEAKENED IMMUNE SYSTEM,
MAKING ONE MORE SUSCEPTIBLE TO INFECTION,
WHICH CAN THEN LEAD TO SEPSIS.

KNOW THE SIGNS OF SEPSIS!



Infographic 12/21



Global
Sepsis
Alliance

worldsepsisday.org
globalsepsisalliance.org

September | World
13 | Sepsis
2024 | Day



WORLD SEPSIS DAY INFOGRAPHICS

April 7th – World Health Day

SEPSIS AFFECTS 47 TO 50 MILLION PEOPLE ANNUALLY,
KILLING AT LEAST 11 MILLION OF THEM.

20 % OF ALL DEATHS WORLDWIDE ARE ASSOCIATED WITH
SEPSIS.

THIS MAKES SEPSIS A GLOBAL HEALTH CRISIS.



Infographic 13/21



Global
Sepsis
Alliance

worldsepsisday.org
globalsepsisalliance.org

September | World
13 | Sepsis
2024 | Day



WORLD SEPSIS DAY INFOGRAPHICS

The Last Week of April – World Immunization Week

VACCINATION CAN PREVENT INFECTIONS THAT LEAD
TO SEPSIS, PREVENTING MILLIONS OF SEPSIS CASES
FROM EVER HAPPENING.



Infographic 14/21



Global
Sepsis
Alliance

worldsepsisday.org
globalsepsisalliance.org

September | World
13 | Sepsis
2024 | Day



WORLD SEPSIS DAY INFOGRAPHICS

April 25th – World Malaria Day

IN 2018, THE WHO REPORTED
228 MILLION CASES OF MALARIA WORLDWIDE.

DO YOU KNOW MALARIA OFTEN LEADS TO SEPSIS?



Infographic 15/21



Global
Sepsis
Alliance

worldsepsisday.org
globalsepsisalliance.org

September | World
13 | Sepsis
2024 | Day

WORLD SEPSIS DAY INFOGRAPHICS

May 31st – World No Tobacco Day

SMOKING IS A RISK FACTOR FOR SEPSIS,
INCREASING THE CHANCES OF RESPIRATORY INFECTIONS THAT
OFTEN LEAD TO SEPSIS.



Infographic 16/21



Global
Sepsis
Alliance

worldsepsisday.org
globalsepsisalliance.org

September | World
13 | Sepsis
2024 | Day

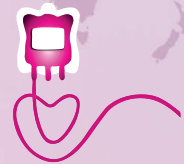


WORLD SEPSIS DAY INFOGRAPHICS

June 14th – World Blood Donor Day

DO YOU KNOW MANY PATIENTS WITH SEPSIS REQUIRE
TRANSFUSION OF BLOOD OR BLOOD PRODUCTS?

ENSURING A SAFE BLOOD SUPPLY IS AN IMPORTANT STEP IN
PREVENTING SEPSIS WORLDWIDE.



Infographic 17/21



Global
Sepsis
Alliance

worldsepsisday.org
globalsepsisalliance.org

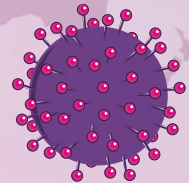
September | World
13 | Sepsis
2024 | Day



WORLD SEPSIS DAY INFOGRAPHICS

July 28th – World Hepatitis Day

WHILE VIRAL HEPATITIS RARELY CAUSES SEPSIS ITSELF,
HEPATITIS CAN ALTER THE IMMUNE SYSTEM,
MAKING ONE MORE SUSCEPTIBLE TO INFECTION,
WHICH CAN THEN LEAD TO SEPSIS.



Infographic 18/21



Global
Sepsis
Alliance

worldsepsisday.org
globalsepsisalliance.org

September | World
13 | Sepsis
2024 | Day



WORLD SEPSIS DAY INFOGRAPHICS

September 13th – World Sepsis Day

SEPSIS IS THE FINAL COMMON PATHWAY TO DEATH FROM MOST
INFECTIOUS DISEASES.

DESPITE BEING A MEDICAL EMERGENCY AND HAVING DIRECT
TIES TO ALL OTHER **WORLD HEALTH DAYS**, SEPSIS IS STILL
NOT GETTING THE ATTENTION IT DESERVES.

AWARENESS SAVES LIVES.

LEARN ABOUT SEPSIS AT
WORLDSEPSISDAY.ORG



Infographic 19/21



Global
Sepsis
Alliance

worldsepsisday.org
globalsepsisalliance.org

September | World
13 | Sepsis
2024 | Day



WORLD SEPSIS DAY INFOGRAPHICS

October 5th – World Meningitis Day

MENINGITIS AFFECTS MORE THAN
2.8 MILLION PEOPLE GLOBALLY
EACH YEAR.

DO YOU KNOW MENINGITIS OFTEN LEADS TO SEPSIS?



Infographic 20/21



Global
Sepsis
Alliance

worldsepsisday.org
globalsepsisalliance.org

September | World
13 | Sepsis
2024 | Day



WORLD SEPSIS DAY INFOGRAPHICS

December 1st - World AIDS Day

PEOPLE WITH HIV/AIDS OFTEN HAVE A WEAKENED IMMUNE SYSTEM, MAKING THEM MORE SUSCEPTIBLE TO INFECTION, WHICH CAN THEN LEAD TO SEPSIS.



Infographic 21/21



Global
Sepsis
Alliance

worldsepsisday.org
globalsepsisalliance.org

September | World
13 | Sepsis
2024 | Day